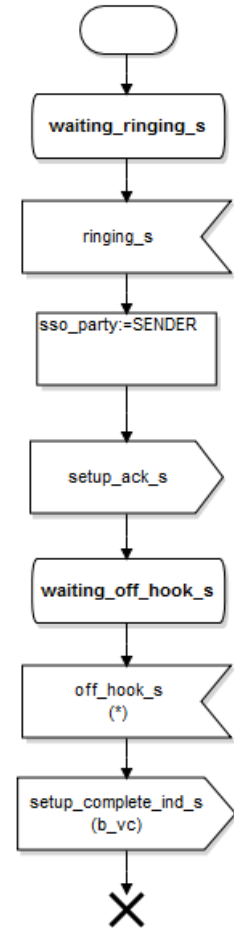
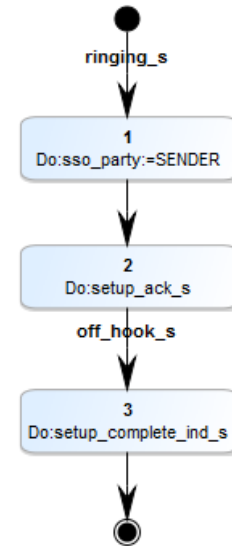
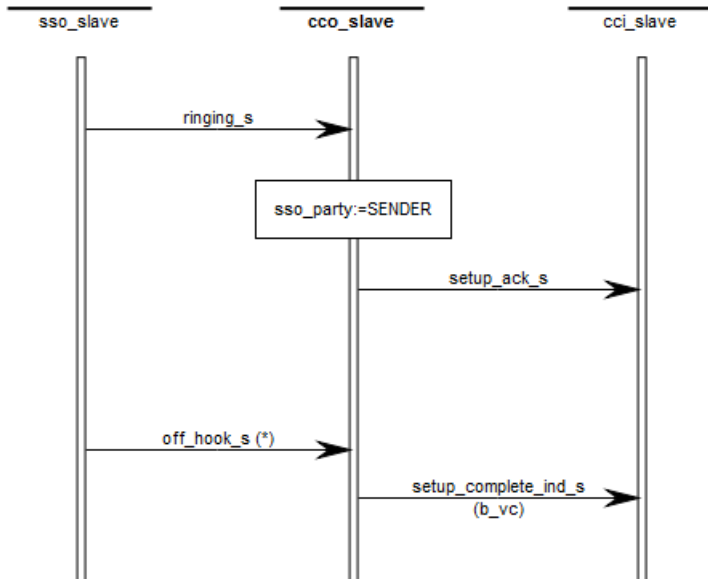


From Sequence Diagrams to State Machines with MetaEdit+

Basic concept

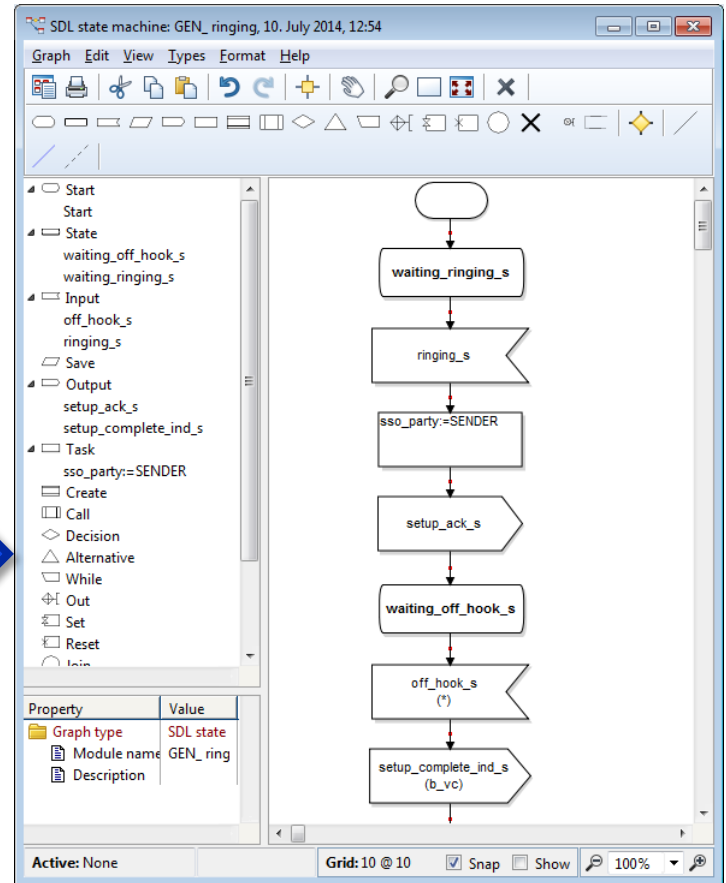
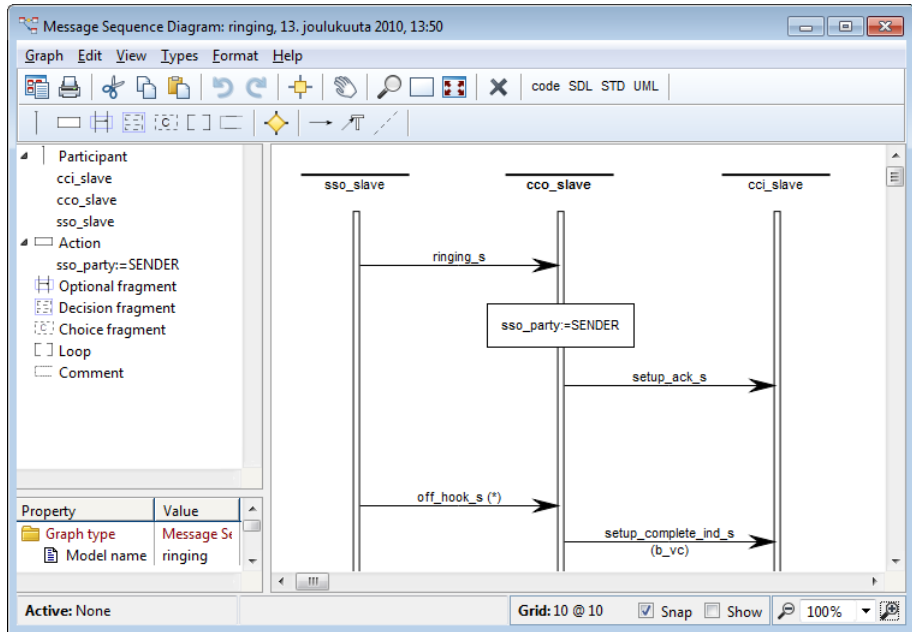
■ From Sequence Diagram To State Machine:

- UML
- SDL
- Mealy
- ...

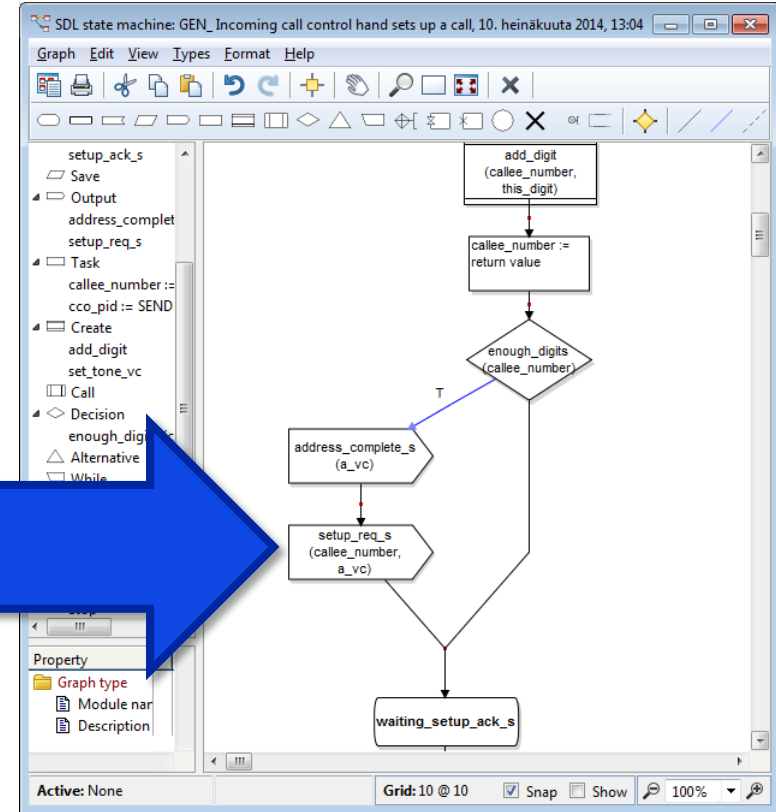
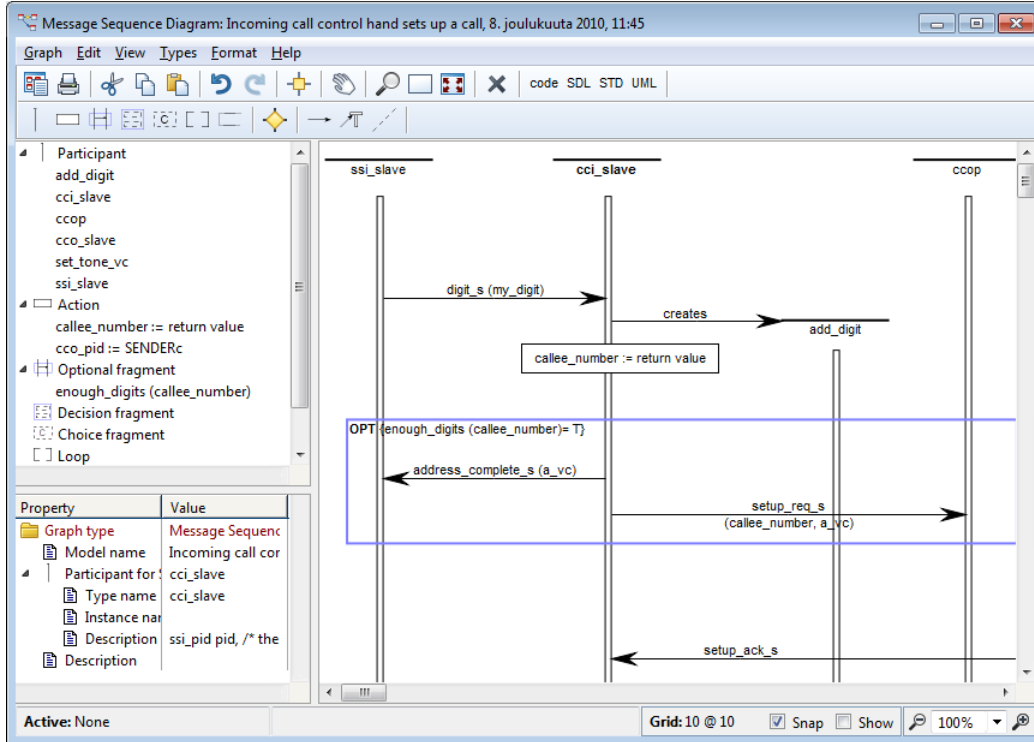


Small example

- State machine is produced for each object of sequence diagram:



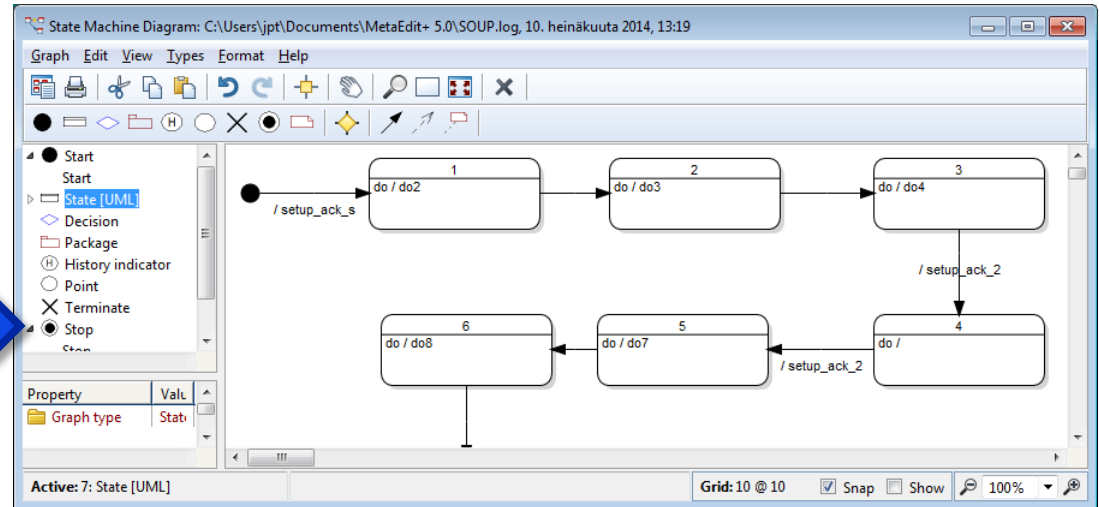
Example with conditions



Reading traces from files

- State machines can be created also from external sources like reading trace from files

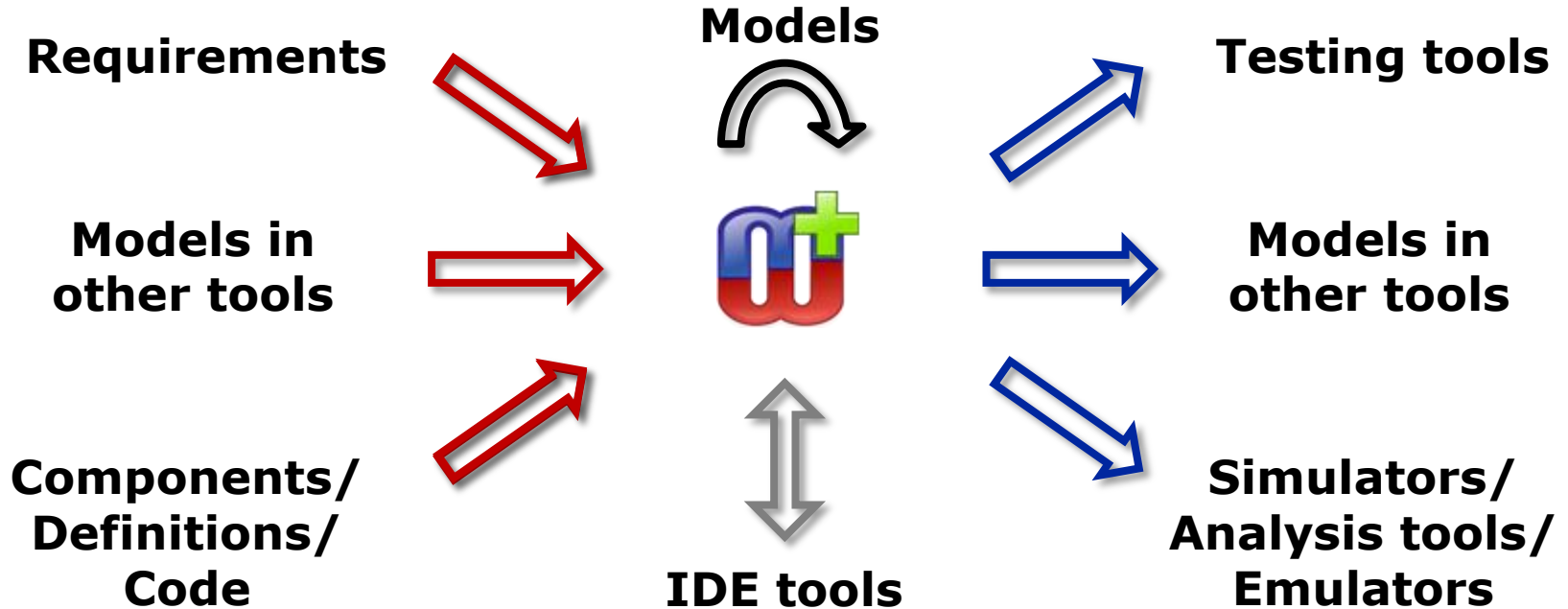
```
soup.log - Notepad
File Edit Format View Help
I: setup_ack_s
O: do2
O: do3
O: do4
I: setup_ack_2
I: setup_ack_2
O: do7
O: do8
O: do9
I: setup_ack_2
O: do11
O: do12
O: do13
I: setup_ack_1
I: setup_ack_6
I: setup_ack_21
O: do21
I: setup_ack_23
O: do23
I: setup_ack_24
O: do23
I: set
```



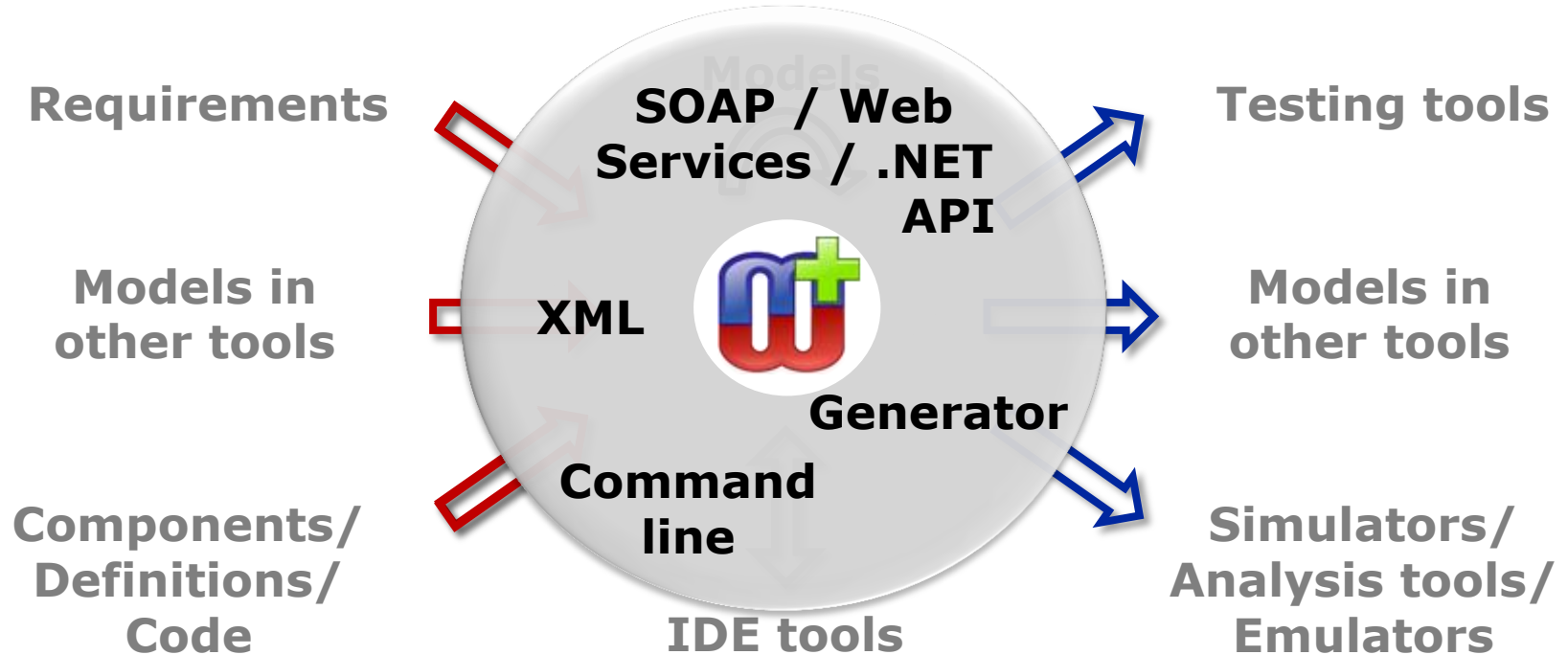
Transformation tools and interfaces

- Transformation to produce state machines can be done
 - Using MetaEdit+ generator
 - Using external tools calling MetaEdit+ API
- Transformation includes the rules needed and are based on
 - input (e.g. sequences)
 - output (e.g. state machines)
- MetaEdit+ allows to define both languages to express models and related transformations

Integration scenarios



MetaEdit+ integration technologies



Thank you!



www.metacase.com